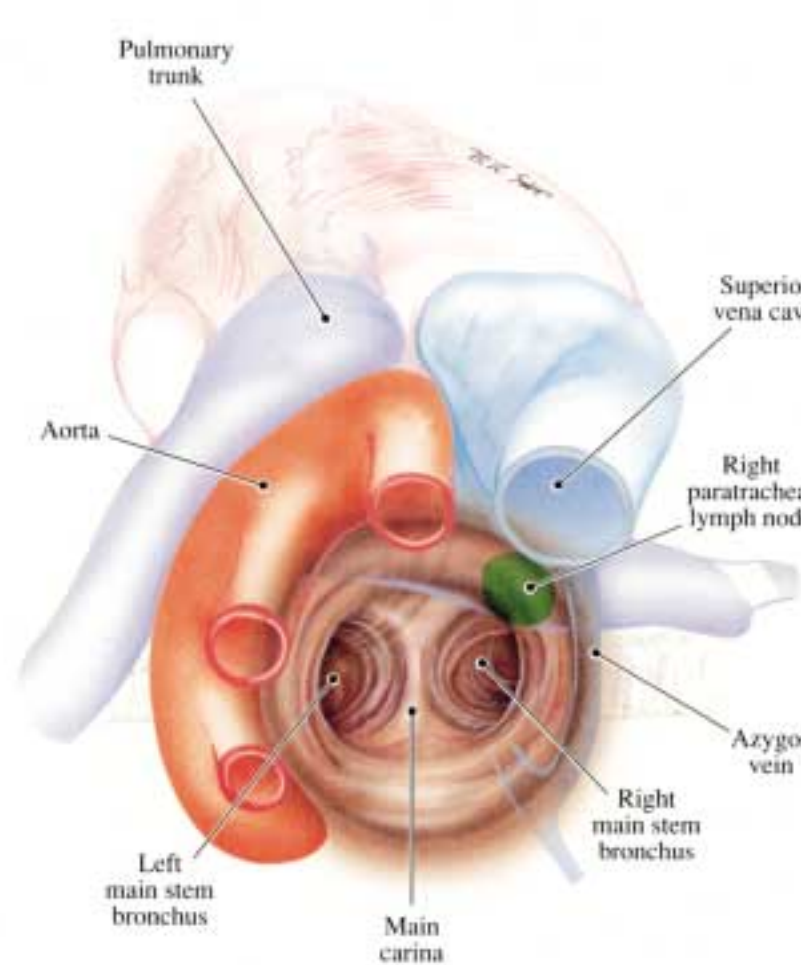


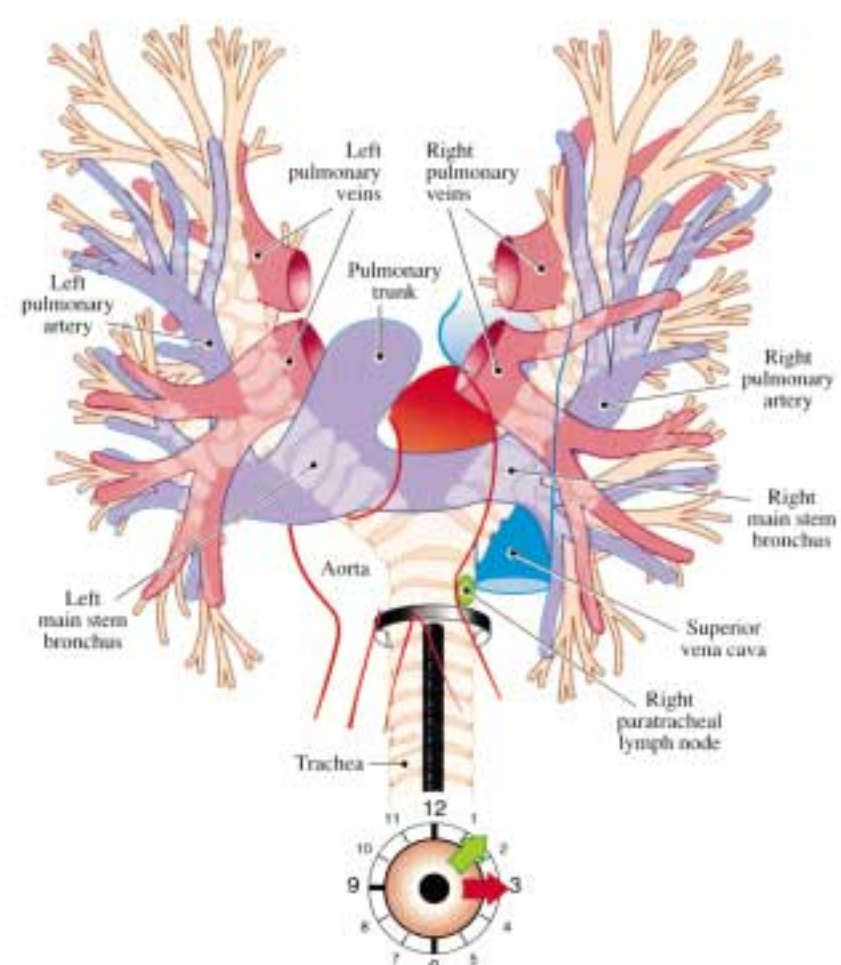
# Applied Anatomy of the Airways

For Flexible Bronchoscopy

▼ Panel A



▼ Panel B

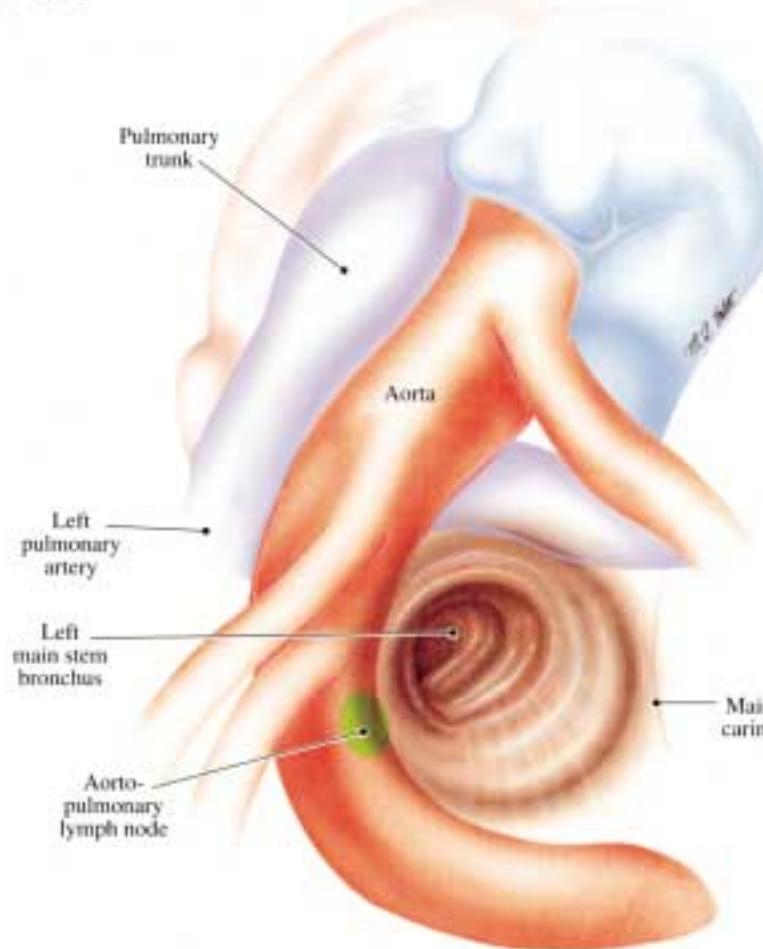


## DISTAL TRACHEA

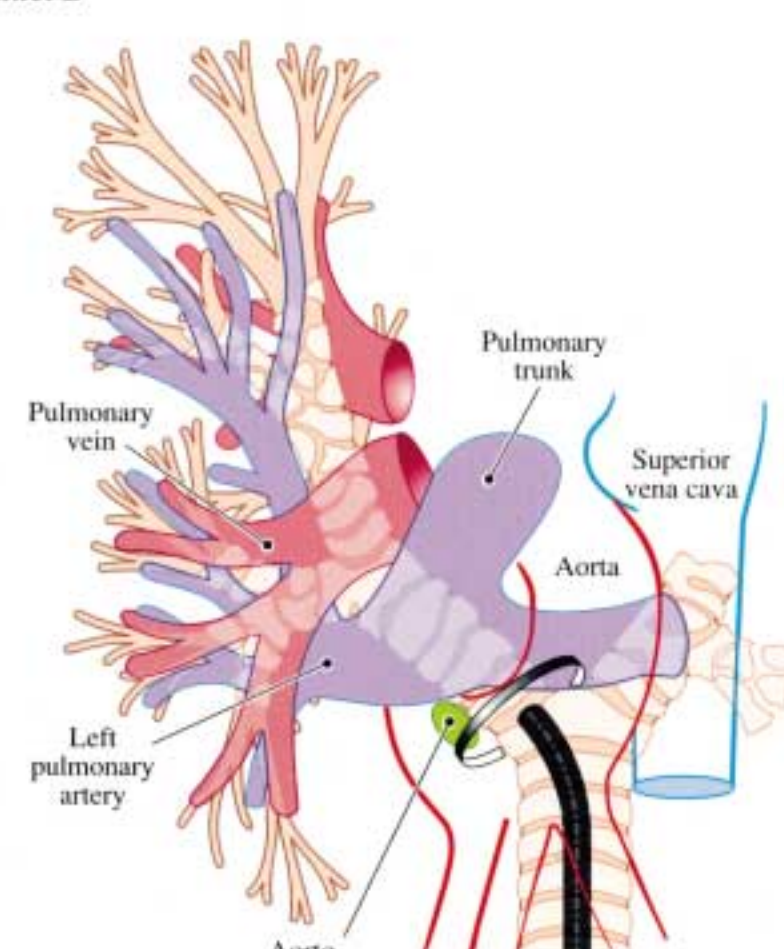
**PANEL A:** Endoscopic view of the distal trachea, with adjacent vessels and lymph nodes superimposed.

**PANEL B:** The right paratracheal lymph node is between the one and two o'clock position, whereas the azygos vein is located at the three o'clock position.

▼ Panel A



▼ Panel B

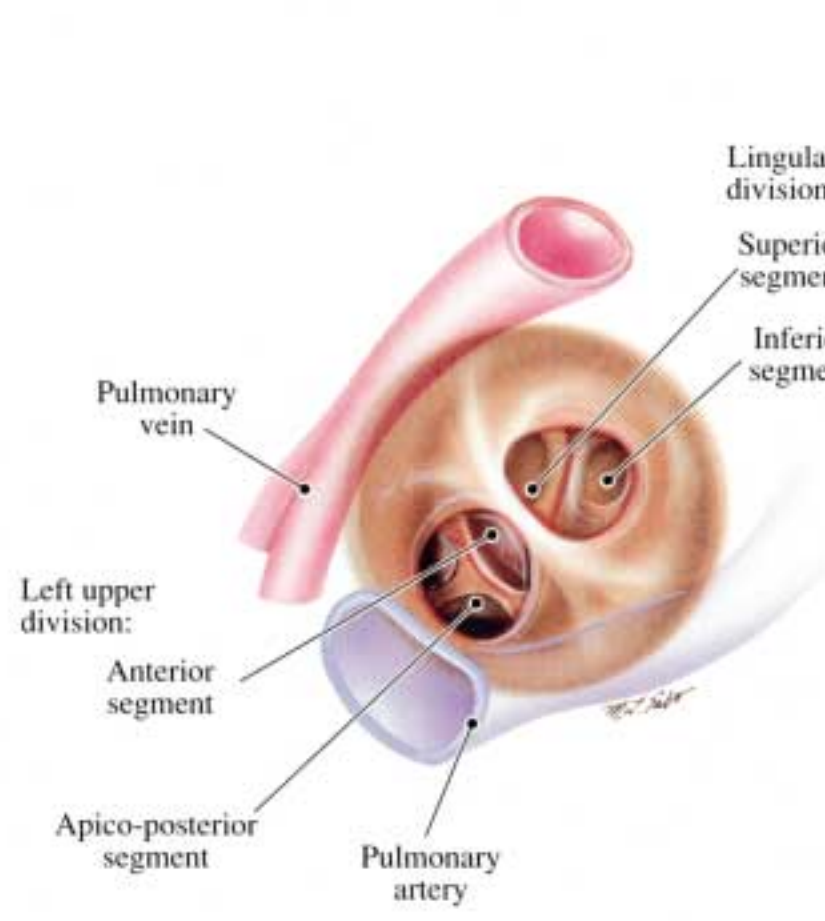


## LEFT MAIN BRONCHUS

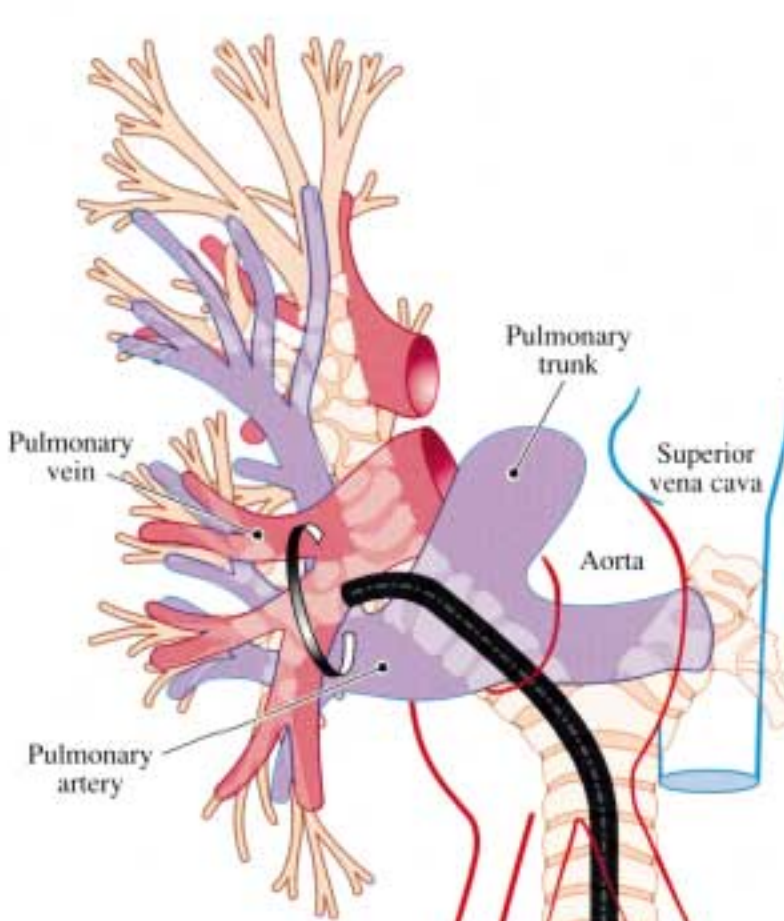
**PANEL A:** Endoscopic view of the left main stem bronchus, with vessels and the aortopulmonary lymph node superimposed at the nine o'clock position.

**PANEL B:** Endoscopic clock face view, with green arrow indicating proper site for TBNA of aortopulmonary lymph node below the aortic knob. Red arrow indicates location of left pulmonary artery and aorta.

▼ Panel A



▼ Panel B

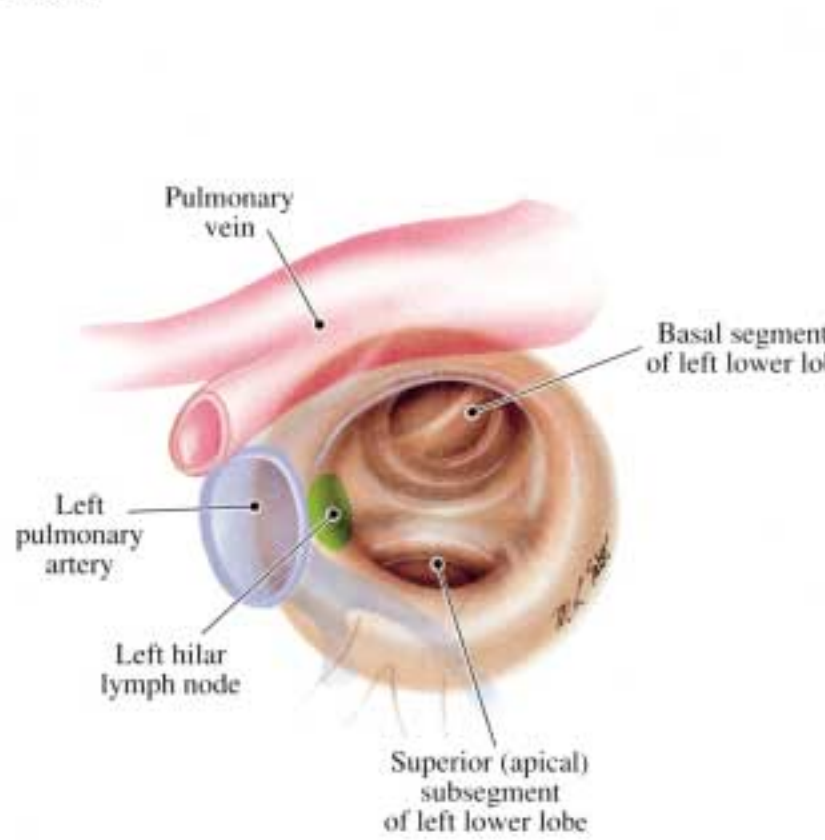


## LEFT UPPER LOBE

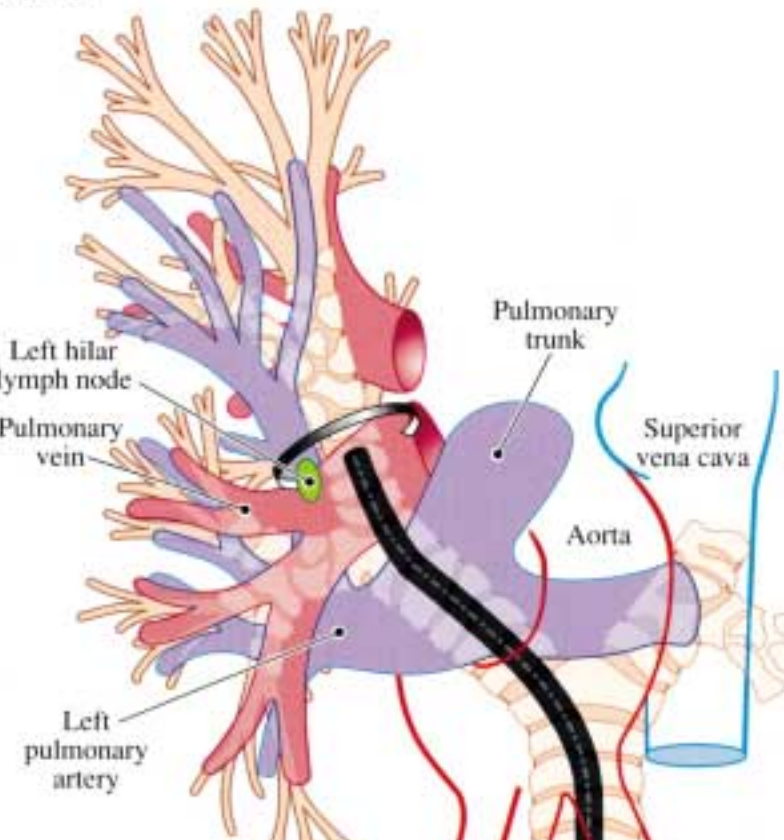
**PANEL A:** Endoscopic view of the left upper lobe bronchus, with vessels superimposed.

**PANEL B:** Endoscopic clock face view, with red arrow at nine o'clock indicating the location of the left pulmonary artery.

▼ Panel A



▼ Panel B

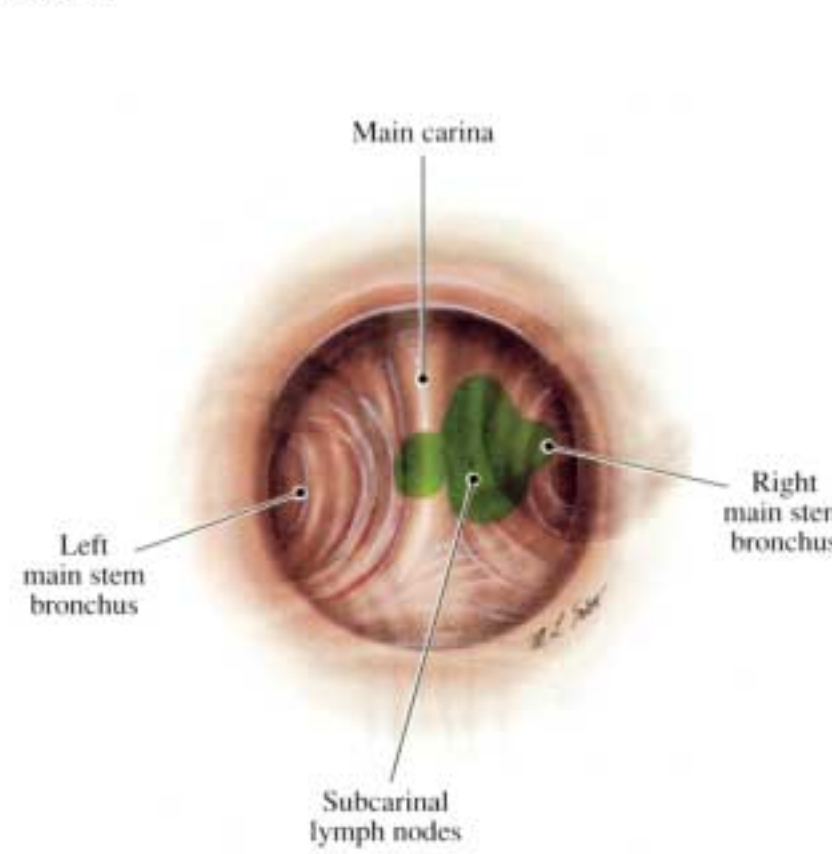


## LEFT LOWER LOBE

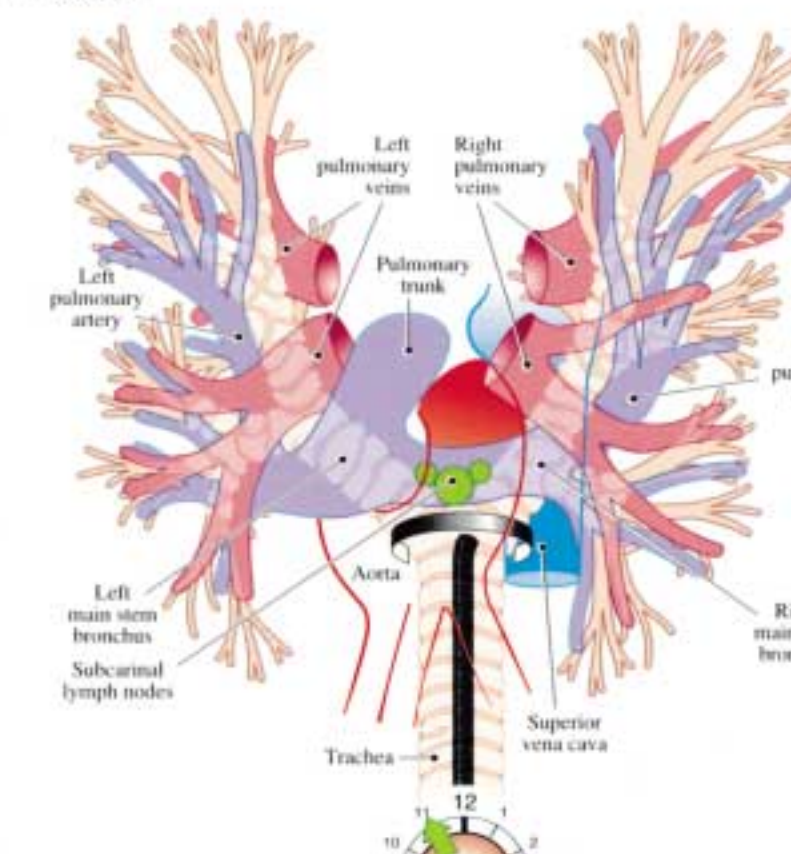
**PANEL A:** Endoscopic view of the distal left main stem bronchus.

**PANEL B:** Endoscopic clock face view, with green arrow indicating proper site for TBNA of the left hilar lymph node

▼ Panel A



▼ Panel B

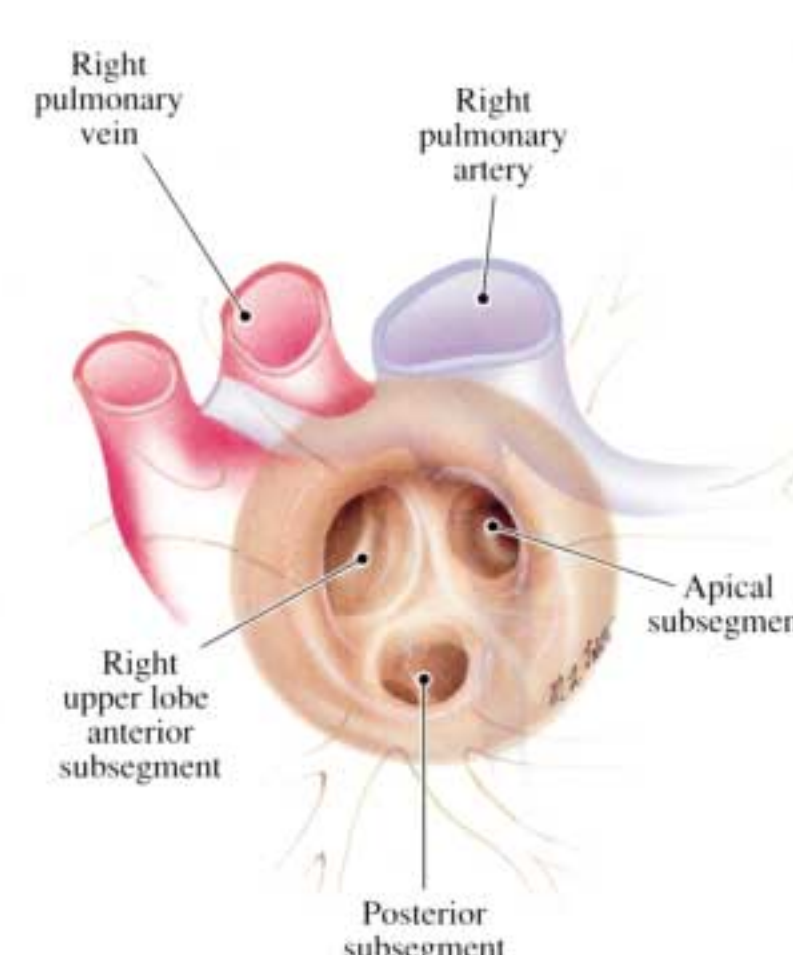


## CARINA

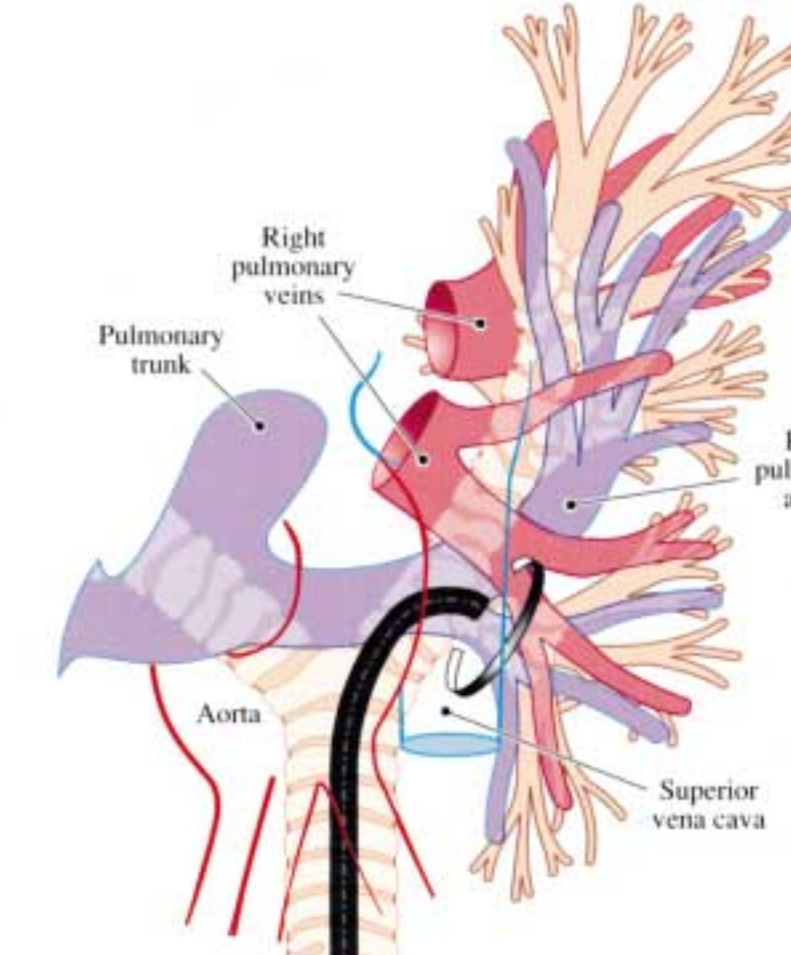
**PANEL A:** Endoscopic view of the main carina, with surrounding lymph nodes superimposed.

**PANEL B:** An Endoscopic view of the main carina, with surrounding lymph nodes superimposed.

▼ Panel A



▼ Panel B

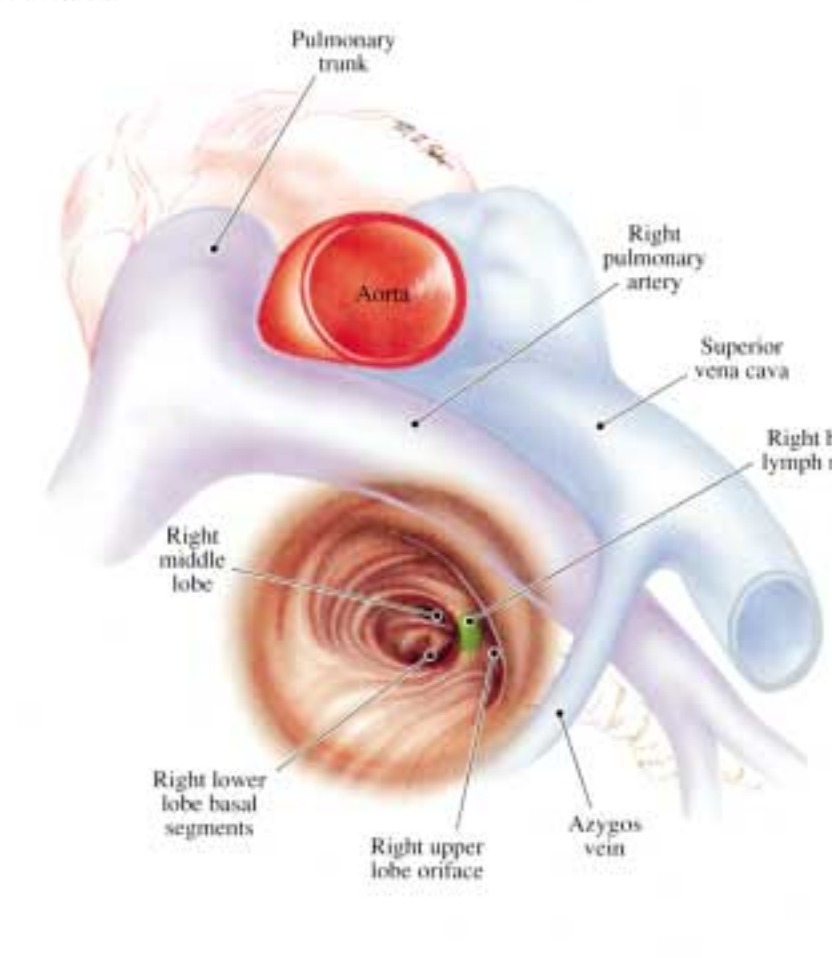


## RIGHT UPPER LOBE

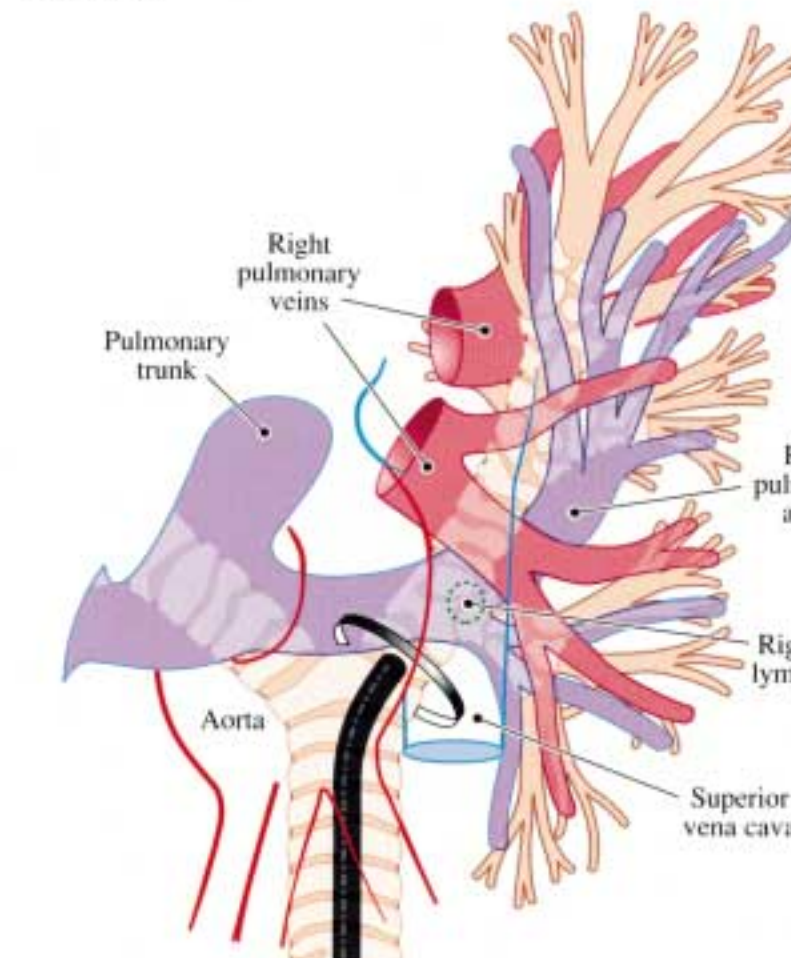
**PANEL A:** Endoscopic view of the right upper lobe orifice, with surrounding vessels

**PANEL B:** Endoscopic clock face view, with red arrow indicating location of the right pulmonary artery.

▼ Panel A



▼ Panel B

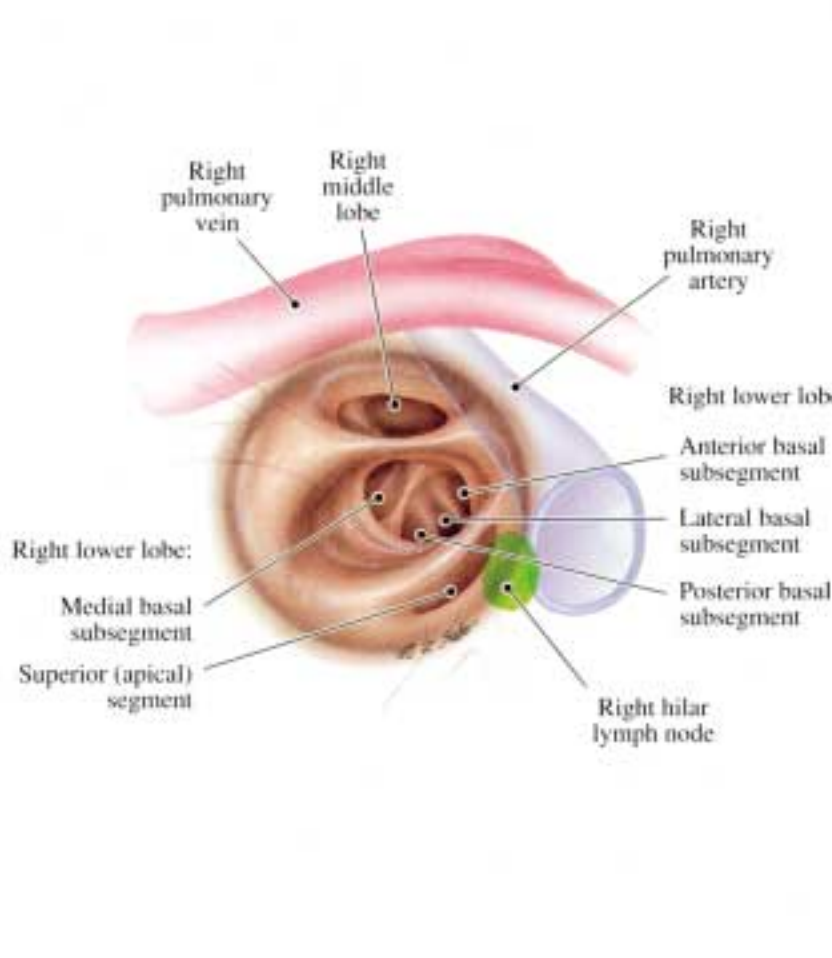


## BRONCHUS INTERMEDIUS-PROXIMAL

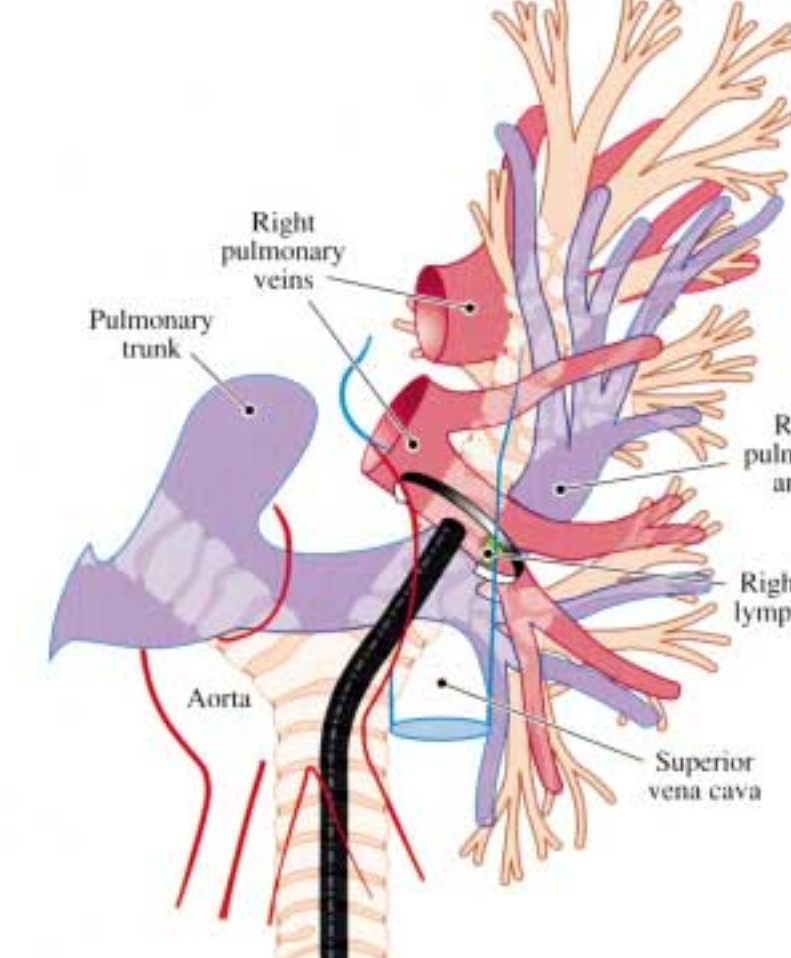
**PANEL A:** Endoscopic view of the bronchus intermedius, with vessels and lymph nodes superimposed

**PANEL B:** Endoscopic clock face view, with green arrow indicating proper site for TBNA of the right hilar lymph node. Red arrow indicates right pulmonary artery.

▼ Panel A



▼ Panel B



## BRONCHUS INTERMEDIUS-DISTAL

**PANEL A:** Endoscopic view of the bronchus intermedius with hilar lymph node superimposed at the three o'clock position.

**PANEL B:** Endoscopic clock face view with the green arrow indicating the proper site for TBNA of right hilar lymph node. The red arrow indicates location of right pulmonary vein.

\*The clock faces on B-panels represent a schematic of the endoscopic view at the indicated cross section of the airway. Orientation for the clock face diagram: patient in supine position, bronchoscopist standing behind patients head. Green and red arrows respectively indicate safe and unsafe location for needle aspiration of laser beam.

Reprinted with permission from Wang, K.-P. and Mehta, A., Flexible Bronchoscopy, Blackwell Science (Boston) 1995